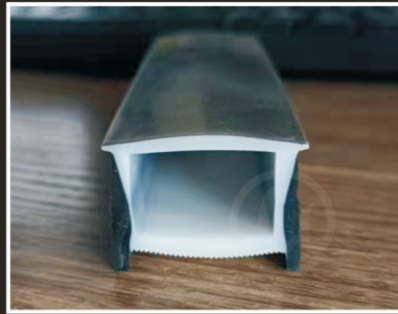


Silicone Neon Flex Tube

专注LED柔性有机硅胶管

【高透环保阻燃】



2022 | LED硅胶管产品图册

LED SILICONE TUBE PRODUCT ATLAS

LED柔性硅胶管/柔性灯带/柔性线条灯

www.vgr8.com
sales@vgr8.com

正面发光系列

FRONT LUMINOUS SERIES >>>

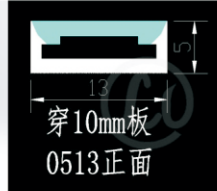
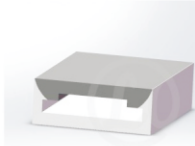
型号 : 0513

尺寸 / SIZE

13x5mm

适用 / APPLY

PCB-8-10mm灯板 LED PCB width



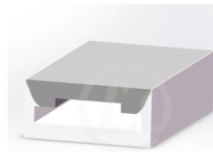
型号 : 0511

尺寸 / SIZE

11x5mm

适用 / APPLY

PCB-8mm灯板



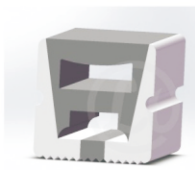
型号 : 1010 ^{正面}

尺寸 / SIZE

10x10mm

适用 / APPLY

PCB-5mm灯板 LED PCB width



型号 : 0807

尺寸 / SIZE

8x7mm

适用 / APPLY

PCB-5mm灯板



型号 : 1010 ^{目面}

尺寸 / SIZE

10x10mm

适用 / APPLY

PCB-5mm灯板



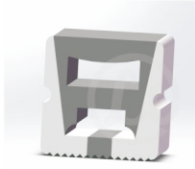
型号 : 1212 ^{正面}

尺寸 / SIZE

12x12mm

适用 / APPLY

PCB-5-8mm灯板 LED PCB width



型号 : 1212 ^{目面}

尺寸 / SIZE

12x12mm

适用 / APPLY

PCB-5-8mm灯板



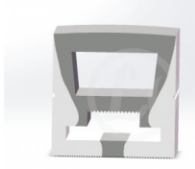
型号 : 1414 ^{正面}

尺寸 / SIZE

14x14mm

适用 / APPLY

PCB-8-10mm灯板 LED PCB width



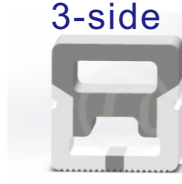
型号 : 1414 ^{目面}

尺寸 / SIZE

14x14mm

适用 / APPLY

PCB-8-10mm灯板



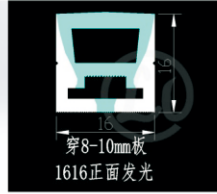
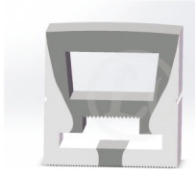
型号 : 1616 ^{正面}

尺寸 / SIZE

16x16mm

适用 / APPLY

PCB-8-12mm灯板 LED PCB width



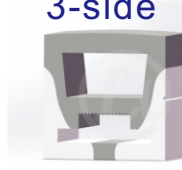
型号 : 1616 ^{目面}

尺寸 / SIZE

16x16mm

适用 / APPLY

PCB-8-12mm灯板



型号 : 1616 ^{带边}

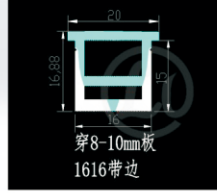
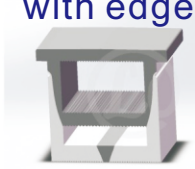
with edge

尺寸 / SIZE

16x16mm

适用 / APPLY

PCB-8-12mm灯板 LED PCB width



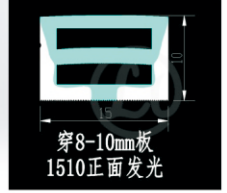
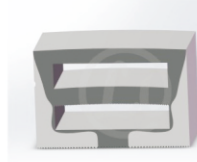
型号 : 1510

尺寸 / SIZE

15x10mm

适用 / APPLY

PCB-8-10mm灯板



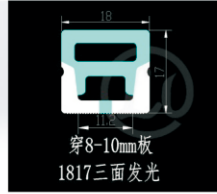
型号 : 1817

尺寸 / SIZE

18x17mm

适用 / APPLY

PCB-10-12mm灯板 LED PCB width



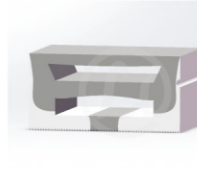
型号 : 2010

尺寸 / SIZE

20x10mm

适用 / APPLY

PCB-8-10mm灯板



PCB-xx-xxmm = LED Strip PCB width

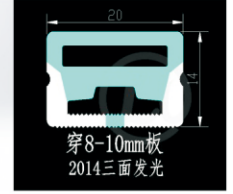
型号 : 2014 正面

尺寸 / SIZE
20x14mm
适用 / APPLY
PCB-8-12mm灯板



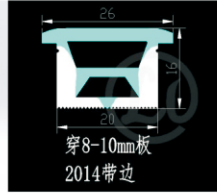
型号 : 2014 侧面 3-side

尺寸 / SIZE
20x14mm
适用 / APPLY
PCB-8-12mm灯板



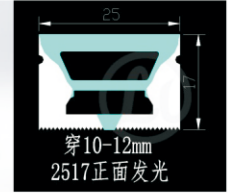
型号 : 2014 带边 with edge

尺寸 / SIZE
20x14mm
适用 / APPLY
PCB-8-10mm灯板



型号 : 2517

尺寸 / SIZE
25x17mm
适用 / APPLY
PCB-10mm灯板



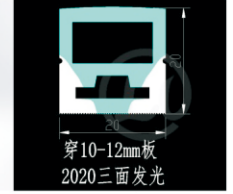
型号 : 2020 正面

尺寸 / SIZE
20x20mm
适用 / APPLY
PCB-8-12mm灯板



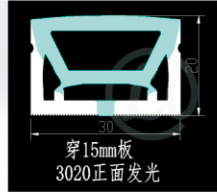
型号 : 2020 侧面 3-side

尺寸 / SIZE
20x20mm
适用 / APPLY
PCB-8-12mm灯板



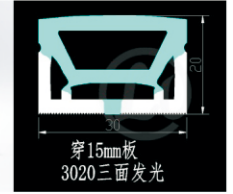
型号 : 3020 正面

尺寸 / SIZE
30x20mm
适用 / APPLY
PCB-10-15mm灯板



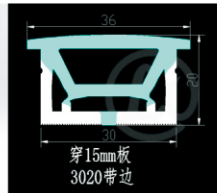
型号 : 3020 侧面 3-side

尺寸 / SIZE
30x20mm
适用 / APPLY
PCB-10-15mm灯板



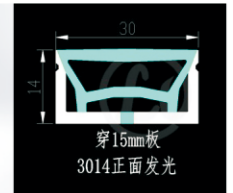
型号 : 3020 带边 with edge

尺寸 / SIZE
30x20mm
适用 / APPLY
PCB-10-15mm灯板



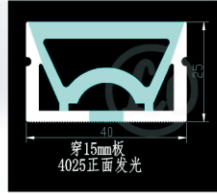
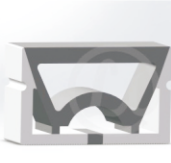
型号 : 3014

尺寸 / SIZE
30x14mm
适用 / APPLY
PCB-10-15mm灯板



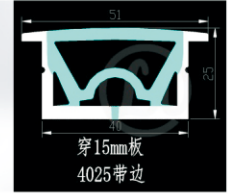
型号 : 4025 正面

尺寸 / SIZE
40x25mm
适用 / APPLY
PCB-15mm灯板



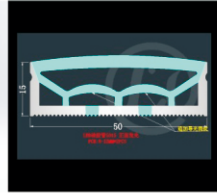
型号 : 4025 带边 with edge

尺寸 / SIZE
40x25mm
适用 / APPLY
PCB-15mm灯板



型号 : 5015

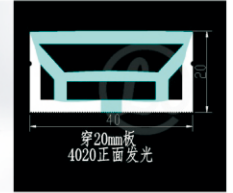
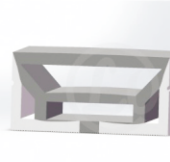
尺寸 / SIZE
50x15mm
适用 / APPLY
PCB-8-12mm*2灯板



dual
threading

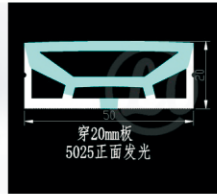
型号 : 4020 正面

尺寸 / SIZE
40x20mm
适用 / APPLY
PCB-15mm灯板



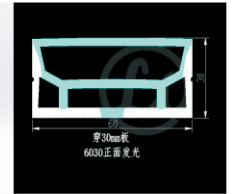
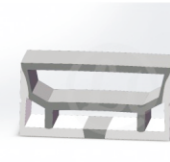
型号 : 5020

尺寸 / SIZE
50x20mm
适用 / APPLY
PCB-15-20mm灯板



型号 : 6030 正面

尺寸 / SIZE
60x30mm
适用 / APPLY
PCB-20-30mm灯板



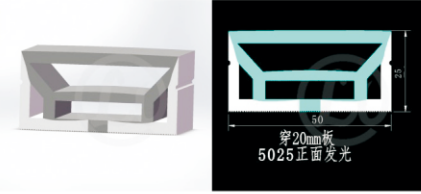
PCB-xx-xxmm = LED Strip PCB width

型号 : 5025 **正面**

尺寸 / SIZE
50x25mm

适用 / APPLY

PCB-15-20mm灯板



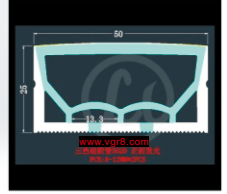
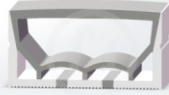
型号 : 5025 **双穿**

尺寸 / SIZE
50x25mm

适用 / APPLY

PCB-8-10mm*2灯板

dual
threading

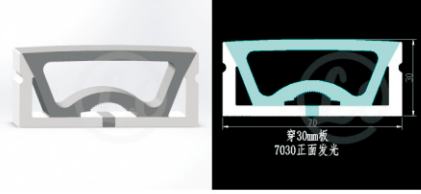


型号 : 7030 **正面**

尺寸 / SIZE
70x30mm

适用 / APPLY

PCB-30mm灯板



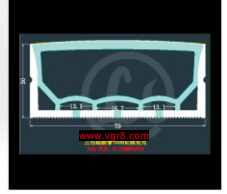
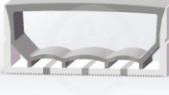
型号 : 7030 **新款**

尺寸 / SIZE
70x30mm

适用 / APPLY

PCB-8-10mm*3灯板

triple
threading



型号 : 8030

尺寸 / SIZE
80x30mm

适用 / APPLY

PCB-8-12mm*3灯板



triple
threading

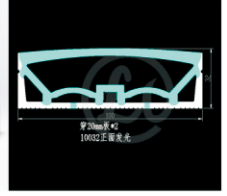
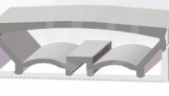
型号 : 10030

尺寸 / SIZE
100x30mm

适用 / APPLY

PCB-20mm*2灯板

dual
threading

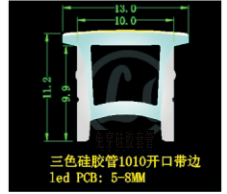


型号 : 1010 **开口带边**

尺寸 / SIZE
10x10mm

适用 / APPLY

PCB-5-8mm灯板

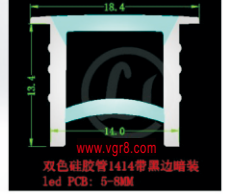


型号 : 1414 **开口带边**

尺寸 / SIZE
14x14mm

适用 / APPLY

PCB-8-10mm灯板

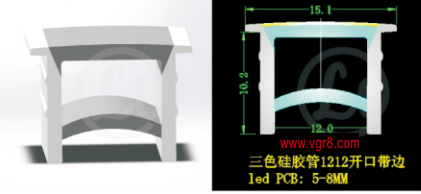


型号 : 1212 **开口带边**

尺寸 / SIZE
12x12mm

适用 / APPLY

PCB-5-8mm灯板

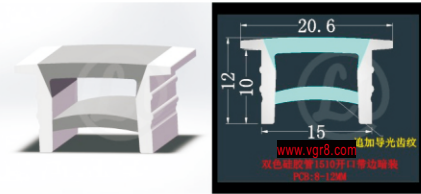


型号 : 1510 **开口带边**

尺寸 / SIZE
15x10mm

适用 / APPLY

PCB-8-10mm灯板

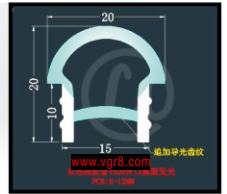


型号 : 1520 **开口弧面**

尺寸 / SIZE
15x20mm

适用 / APPLY

PCB-8-12mm灯板

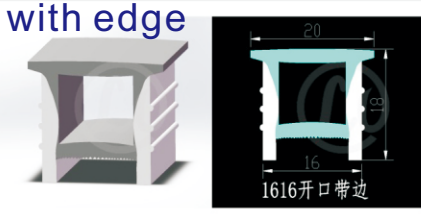


型号 : 1616 **开口带边**

尺寸 / SIZE
16x16mm

适用 / APPLY

PCB-8-12mm灯板



with edge

型号 : 1616 **开口无边**

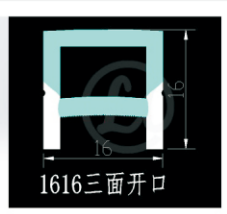
尺寸 / SIZE
16x16mm

适用 / APPLY

PCB-8-12mm灯板



no edge

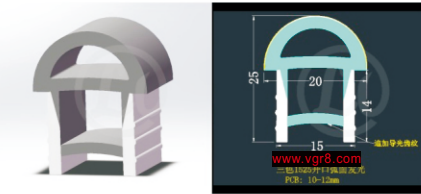


型号 : 1525 **开口弧面**

尺寸 / SIZE
15x25mm

适用 / APPLY

PCB-8-10mm灯板

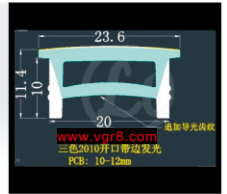


型号 : 2010 **开口带边**

尺寸 / SIZE
20x10mm

适用 / APPLY

PCB-8-12mm灯板



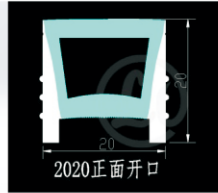
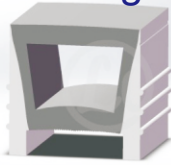
开口带边(免穿)系列 No bottom, threading-free

PCB-xx-xxmm = LED Strip PCB width

型号: 2020

开口无边

no edge

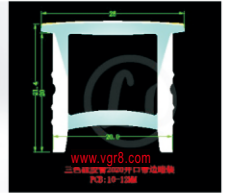


尺寸 / SIZE
20x20mm
适用 / APPLY
PCB-8-12mm灯板

型号: 2020

开口带边

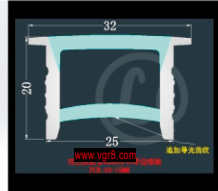
with edge



尺寸 / SIZE
20x20mm
适用 / APPLY
PCB-8-12mm灯板

型号: 2520

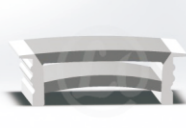
开口带边



尺寸 / SIZE
25x20mm
适用 / APPLY
PCB-8-12mm灯板

型号: 3010

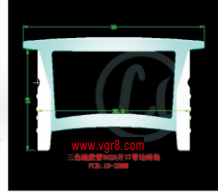
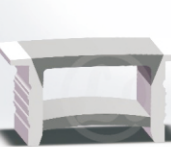
开口带边



尺寸 / SIZE
30x10mm
适用 / APPLY
PCB-8-15mm灯板

型号: 3020

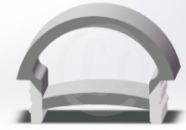
开口带边



尺寸 / SIZE
30x20mm
适用 / APPLY
PCB-8-15mm灯板

型号: 3025

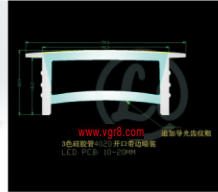
开口弧面



尺寸 / SIZE
30x25mm
适用 / APPLY
PCB-8-15mm灯板

型号: 4020

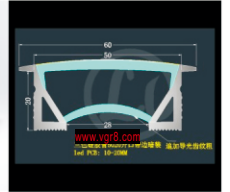
开口带边



尺寸 / SIZE
40x20mm
适用 / APPLY
PCB-10-20mm灯板

型号: 5020

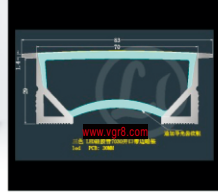
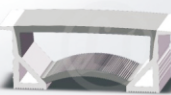
开口带边



尺寸 / SIZE
50x20mm
适用 / APPLY
PCB-10-20mm灯板

型号: 7030

开口带边



尺寸 / SIZE
70x30mm
适用 / APPLY
PCB-10-30mm灯板

侧面发光系列 Side-threading

型号: 0410

侧发光



尺寸 / SIZE
4x10mm
适用 / APPLY
PCB-5mm灯板

型号: 0612

侧发光



尺寸 / SIZE
6x12mm
适用 / APPLY
PCB-5-8mm灯板

型号: 0613

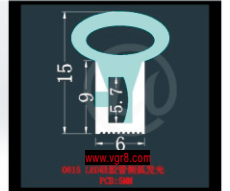
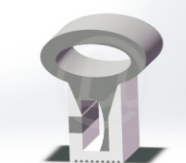
侧弧发光



尺寸 / SIZE
6x13mm
适用 / APPLY
PCB-5-8mm灯板

型号: 0615

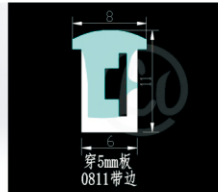
侧弧发光



尺寸 / SIZE
6x15mm
适用 / APPLY
PCB-4-5mm灯板

型号: 0811

侧弧发光



尺寸 / SIZE
8x11mm
适用 / APPLY
PCB-5-8mm灯板

型号: 0817

侧发光

flat



尺寸 / SIZE
8x17mm
适用 / APPLY
PCB-8mm灯板

PCB-xx-xxmm = LED Strip PCB width

型号: 0817 arc

尺寸 / SIZE
8x17mm
适用 / APPLY
PCB-8mm灯板



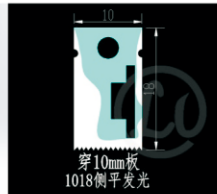
型号: 1015 arc

尺寸 / SIZE
10x15mm
适用 / APPLY
PCB-8mm灯板



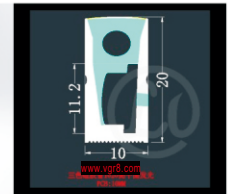
型号: 1018 arc

尺寸 / SIZE
10x18mm
适用 / APPLY
PCB-8-10mm灯板



型号: 1020 arc

尺寸 / SIZE
10x20mm
适用 / APPLY
PCB-10mm灯板



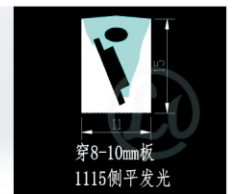
型号: 1023 arc

尺寸 / SIZE
10x23mm
适用 / APPLY
PCB-10mm灯板



型号: 1115 arc

尺寸 / SIZE
11x15mm
适用 / APPLY
PCB-8-10mm灯板



型号: 1212 side

尺寸 / SIZE
12x12mm
适用 / APPLY
PCB-5mm灯板



型号: 1220 arc

尺寸 / SIZE
12x20mm
适用 / APPLY
PCB-10-12mm灯板



型号: 1225 arc

尺寸 / SIZE
12x25mm
适用 / APPLY
PCB-10-12mm灯板



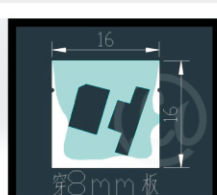
型号: 1525 arc

尺寸 / SIZE
15x25mm
适用 / APPLY
PCB-12mm灯板



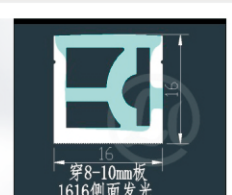
型号: 1616-1 side-1

尺寸 / SIZE
16x16mm
适用 / APPLY
PCB-8-10mm灯板



型号: 1616-2 side-2

尺寸 / SIZE
16x16mm
适用 / APPLY
PCB-8-10mm灯板



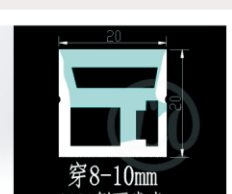
型号: 2020 side-1

尺寸 / SIZE
20x20mm 正侧通用
适用 / APPLY
PCB-10-12mm灯板



型号: 2020 side-2

尺寸 / SIZE
20x20mm
适用 / APPLY
PCB-10-12mm灯板



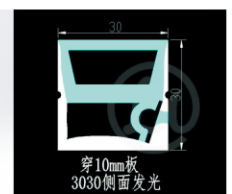
型号: 2032 arc

尺寸 / SIZE
20x32mm
适用 / APPLY
PCB-10mm灯板



型号: 3030 arc

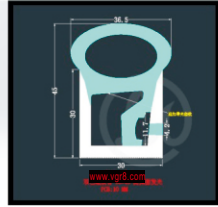
尺寸 / SIZE
30x30mm
适用 / APPLY
PCB-10-12mm灯板



PCB-xx-xxmm = LED Strip PCB width

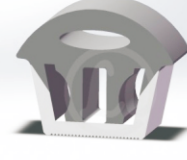
型号: 3045 侧弧发光

尺寸 / SIZE
30x45mm
适用 / APPLY
PCB-10mm灯板



型号: 3224 侧弧发光

尺寸 / SIZE
32x24mm
适用 / APPLY
PCB-10mm*2灯板



综合系列

OTHER SERIES >>>

型号: 1513 侧弧发光

尺寸 / SIZE
15x13mm
适用 / APPLY
PCB-8-10mm灯板



型号: 1313 侧弧发光

尺寸 / SIZE
13x13mm
适用 / APPLY
PCB-5-8mm灯板



型号: 3020 脚踩款

尺寸 / SIZE
30x20mm
适用 / APPLY
PCB-10-15mm灯板



型号: 4020 脚踩款

尺寸 / SIZE
40x20mm
适用 / APPLY
PCB-15-20mm灯板



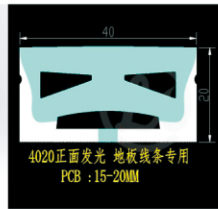
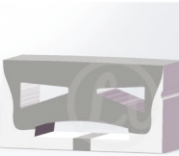
型号: D13-360 侧弧发光

尺寸 / SIZE
D13mm*360°
适用 / APPLY
PCB-5mm双面灯板



型号: D13-270 侧弧发光

尺寸 / SIZE
D13mm*270°
适用 / APPLY
PCB-5mm灯板



型号: D16-270 侧弧发光

尺寸 / SIZE
D16mm*270°
适用 / APPLY
PCB-8mm灯板



型号: D13-270 侧弧发光

尺寸 / SIZE
D13mm*270°
适用 / APPLY
PCB-5mm灯板



型号: D16-270 侧弧发光

尺寸 / SIZE
D16mm*270°
适用 / APPLY
PCB-8mm灯板



型号: D20-270 侧弧发光

尺寸 / SIZE
D20mm*270°
适用 / APPLY
PCB-10mm灯板



型号: D22-360 侧弧发光

尺寸 / SIZE
D22mm*360°
适用 / APPLY
PCB-5mm双面灯板



型号: D24-360 侧弧发光

尺寸 / SIZE
D24mm*360°
适用 / APPLY
PCB-8-10mm双面灯板



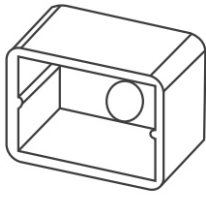
型号: V22 侧弧发光

尺寸 / SIZE
22x13mm
适用 / APPLY
PCB-5mm灯板



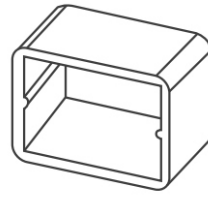
Accessory

end caps



出线堵头

End cap with hole

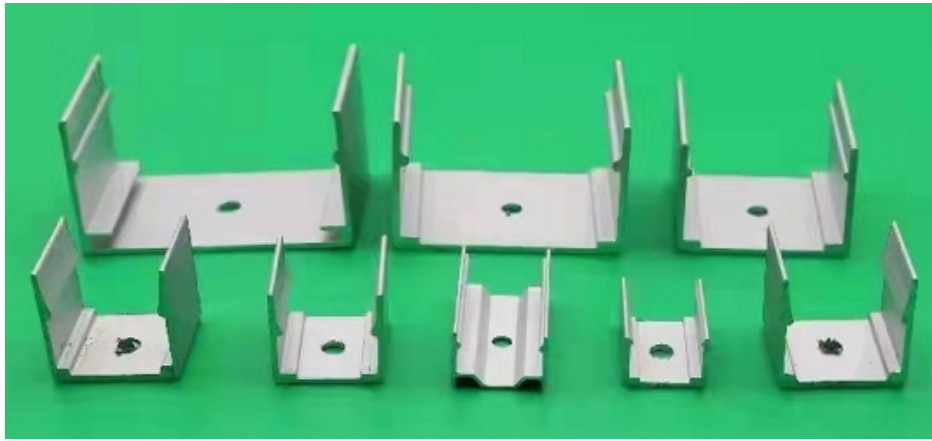


尾塞

End cap no hole



mounting clips



flex mounting keel

